

EAST GREENWICH TWP. FIRE AND RESCUE
CLARKSBORO, NJ

SO# 137798 / Q50955

EMAX RESCUE PUMPER
E-ONE TYPHOON X LONG 4X2 CHASSIS

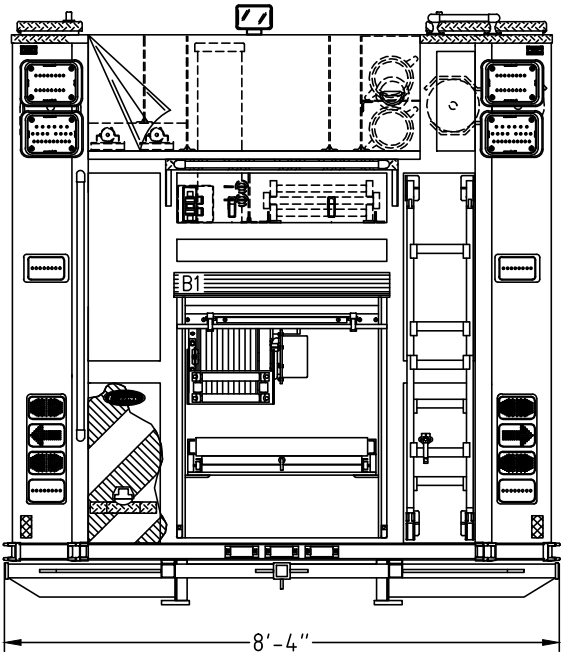
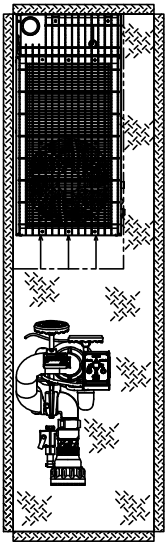
1500 GPM E-ONE PUMP 780 GALLON POLY III TANK (750 WATER/30 FOAM) SMART POWER 20KW HYDR. GENERATOR NIGHT SCAN CHIEF 1.8-3600M LIGHT TOWER 6000 PSI DOT 4-BTL & APPLETON SPACESAVER IN R1	HOSE LOAD:	
	500' OF 2.50" DJ	
	450' OF 1.75" DJ	
	1050' OF 5.00" LDH	
	350' OF 3.00" DJ	
HARD SUCTION STORAGE		

COMPT.	OPENING		INTERIOR DIMENSION				
L1	24W	59H	PUMP PANEL				
R1	24W	59H	26W	3H	12D	UPPER	
			26W	56H	26D	LOWER	
L2/R2	54W	59H	56W	3H	12D	UPPER	
			56W	56H	26D	LOWER	
L3/R3	54W	25H	56W	3H	12D	UPPER	
			56W	22H	26D	LOWER	
L4/R4	54W	59H	56W	3H	12D	UPPER	
			56W	56H	26D	LOWER	
B1	36W	38H	38W	47H	26D		

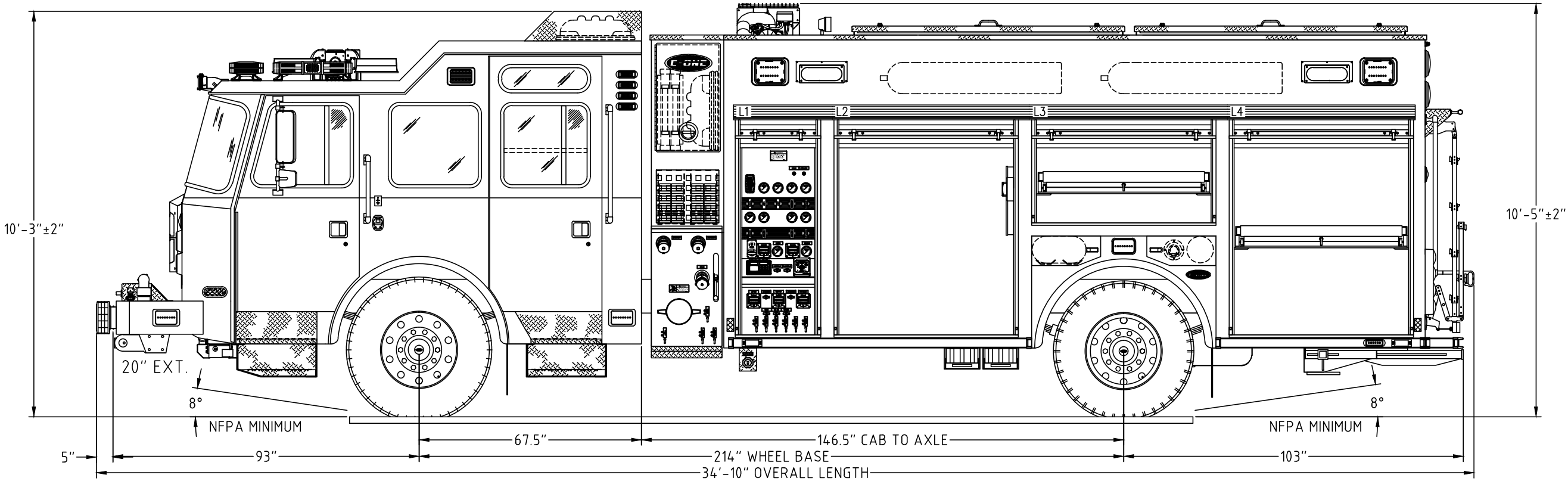
THIS DRAWING IS FOR REFERENCE PURPOSES. ALL DIMENSIONS ARE
SUBJECT TO MINOR VARIATIONS DUE TO MANUFACTURING PROCESSES.

APPROVED FOR PRODUCTION

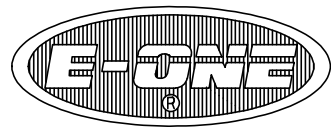
DESIGNER: _____ DATE: 11/20/12



HOSEBED HEIGHT:
(FOR REFERENCE ONLY)
TO TAILBOARD: 71"
TO GROUND: 95"



ADOPELAND	D	RFP	2013-MAR-07	MF
ADOPELAND	C	RFP	2013-JUN-29	MF
WH	B	RFP WITH SIGNED DWG & C/O	2012-NOV-20	WH
DMC/WH	A	INITIAL RELEASE	2012-OCT-08	JD/WH
DRAWN BY	REV	DESCRIPTION	DATE	APPROVED
APPROVAL REVISIONS			SHEET 1 OF 2	

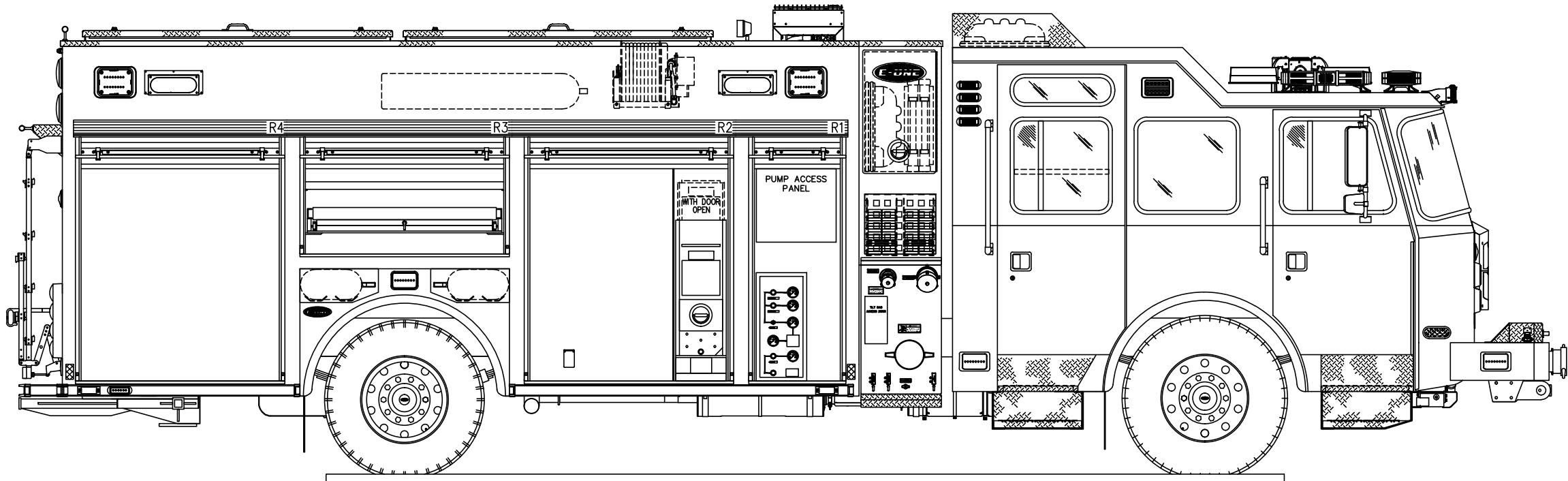
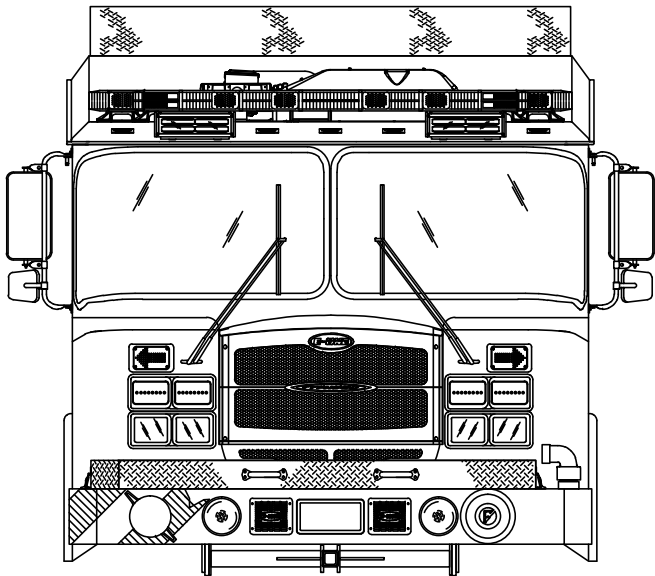


EAST GREENWICH TWP. FIRE AND RESCUE
CLARKSBORO, NJ
SO# 137798 / Q50955
EMAX RESCUE PUMPER
E-ONE TYPHOON X LONG 4X2 CHASSIS

THIS DRAWING IS FOR REFERENCE PURPOSES. ALL DIMENSIONS ARE
SUBJECT TO MINOR VARIATIONS DUE TO MANUFACTURING PROCESSES.

APPROVED FOR PRODUCTION

DESIGNER: _____ DATE: 11/20/12



ACCELAND	D	RFP	2013-MAR-07	MF
ACCELAND	C	RFP	2013-JAN-29	MF
VH	B	RFP WITH SIGNED DWG & C/D	2012-NOV-20	VH
DWG/H	A	INITIAL RELEASE	2012-OCT-08	JD/H
DRAWN BY	REV	DESCRIPTION	DATE	APPROVED
APPROVAL REVISIONS			SHEET 2 OF 2	