



TOWNSHIP OF FRANKLIN FRANKLINVILLE, NJ.

SO# 140139 / Q70565

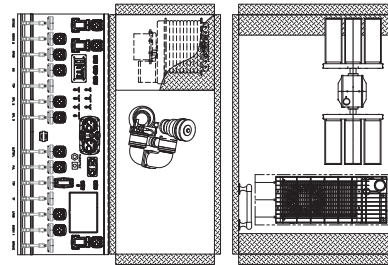
RESCUE PUMPER 60
CYCLONE 2X / 4X2 CHASSIS

2000 GPM HALE QMAX PUMP		HOSE LOAD:	
1235 GALLON WATER		400' OF 2.50" DJ	
		1200' OF 4.00" LDH	
		400' OF 2.50" DJ	
COMPT.	OPENING	INTERIOR DIMENSION	
L1	60W 68H	60W 12H 12D UPPER	60W 56H 26D LOWER
R1	60W 68H	60W 34H 12D UPPER	60W 30H 26D LOWER
L2	56W 34H	56W 12H 12D UPPER	56W 22H 26D LOWER
R2	56W 34H	56W 34H 12D	
L3	42W 68H	42W 12H 12D UPPER	42W 56H 26D LOWER
R3	42W 68H	42W 34H 12D UPPER	42W 30H 26D LOWER
B1	36W 52H	38W 0H 12D UPPER	38W 52H 26D LOWER

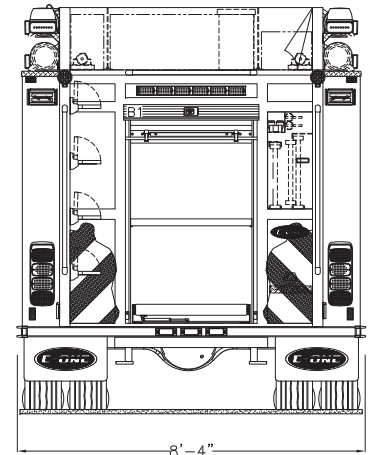
THIS DRAWING IS FOR REFERENCE PURPOSES. ALL DIMENSIONS ARE SUBJECT TO MINOR VARIATIONS DUE TO MANUFACTURING PROCESSES.

APPROVED FOR PRODUCTION

DESIGNER: M. MILDNER DATE: 2016-JAN-15

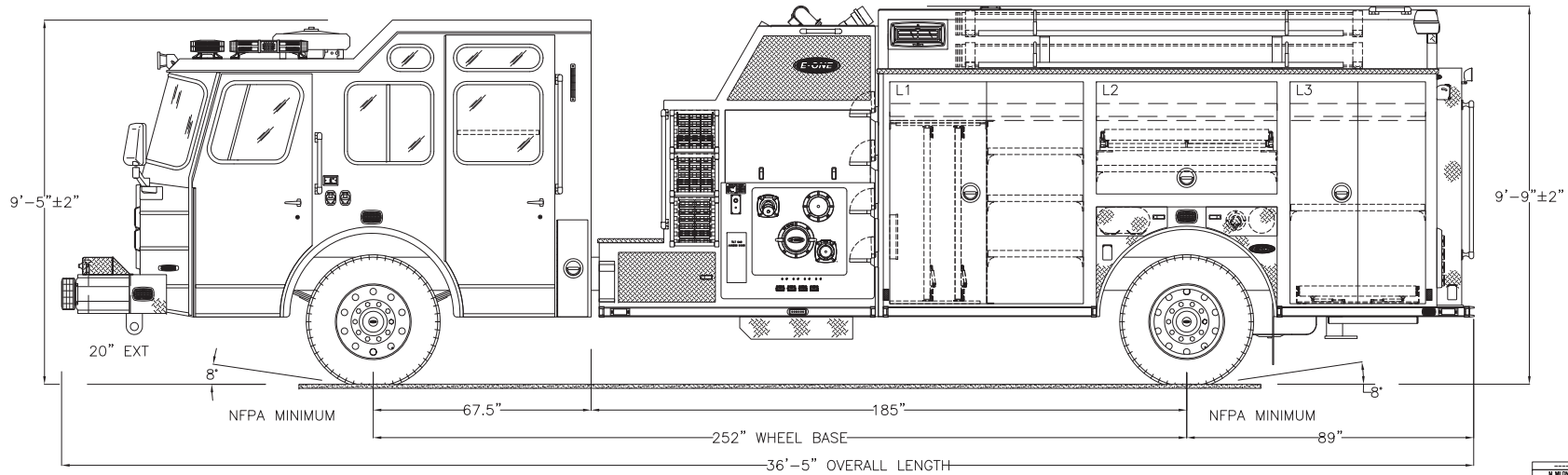


LIGHT TOWER PASS THRU TANK FOR MAST REDUCES WATER CAPACITY APPROX. 50 GAL. 1230 GALLON CAPACITY IS WITH MAST TUNNEL AND LOWERED LIGHT TOWER.



8'-4"

HOSEBED HEIGHT:
(FOR REFERENCE ONLY)
TO TAILBOARD: 74"
TO GROUND: 98"



9'-5"±2"

20" EXT

8"

NFPA MINIMUM

67.5"

252" WHEEL BASE

185"

NFPA MINIMUM

89"

9'-9"±2"

36'-5" OVERALL LENGTH

W MILDNER	C	W E	2016-FEB-02	W MILDNER
W MILDNER	B	REP PUMP PNE BUILD	2016-MAR-18	W MILDNER
W MILDNER	A	INITIAL RELEASE	2015-NOV-24	W MILDNER
DRANK BT	REV	DESCRIPTION	DATE	APPROVED
APPROVAL REVISIONS				SHEET 1 OF 2



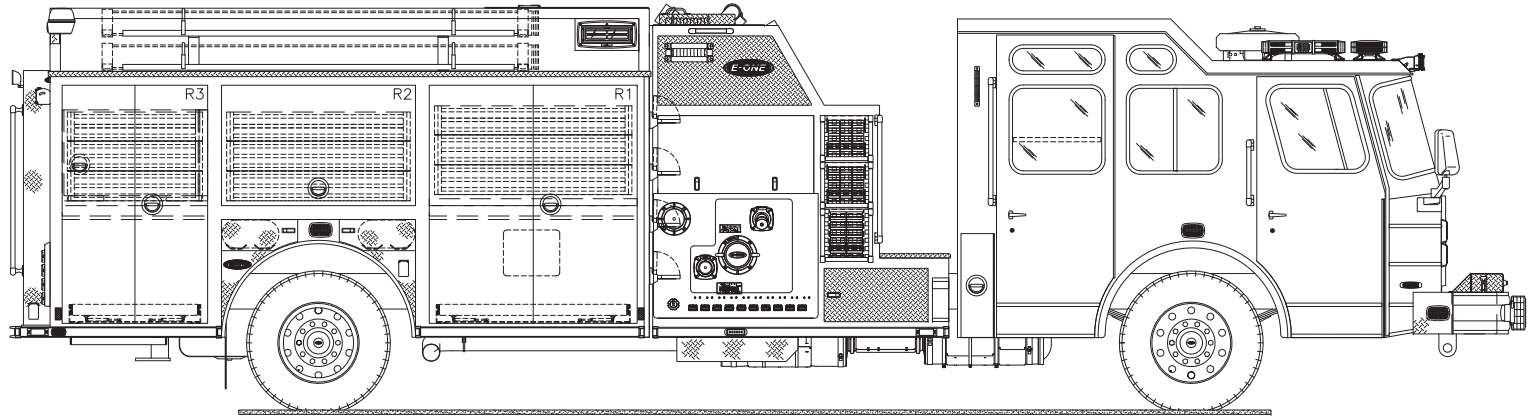
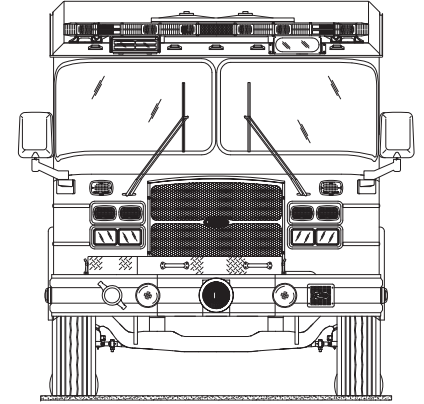
TOWNSHIP OF FRANKLIN FRANKLINVILLE, NJ.

SO# 140139 / Q70565
RESCUE PUMPER 60
CYCLONE 2X / 4X2 CHASSIS

THIS DRAWING IS FOR REFERENCE PURPOSES. ALL DIMENSIONS ARE
SUBJECT TO MINOR VARIATIONS DUE TO MANUFACTURING PROCESSES.

APPROVED FOR PRODUCTION

DESIGNER: M. MILDNER DATE: 2016-JAN-15



	C	WC	2016-11-10	
	A	RP FOR THE BLD	2016-08-28	M MILDNER
	A	INTL. RELEASE	2015-10-24	M MILDNER
	REV	DESCRIPTION	DATE	APPROVED
APPROVAL REVISIONS				
				SHEET 2 OF 3