



# BRYN MAWR FIRE COMPANY

## BRYN MAWR, PA

SO 146162 / Q117507  
PUMPER  
TYPHOON 4X2 CHASSIS

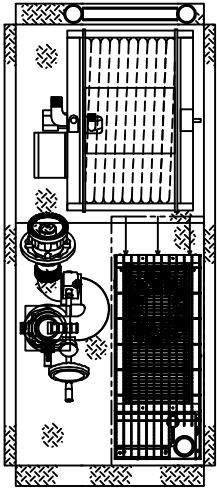
HOSEBED HEIGHT:  
(FOR REFERENCE ONLY)  
TO TAILBOARD: 72"  
TO GROUND: 96±2"

1500 GPM HALE QMAX-XS PUMP 780 GALLON WATER TANK	HOSE LOAD:	
	200'	OF 2.50" DJ
	600'	OF 3.50" DJ
	500'	OF 3.50" DJ
	200'	OF 1.75" DJ

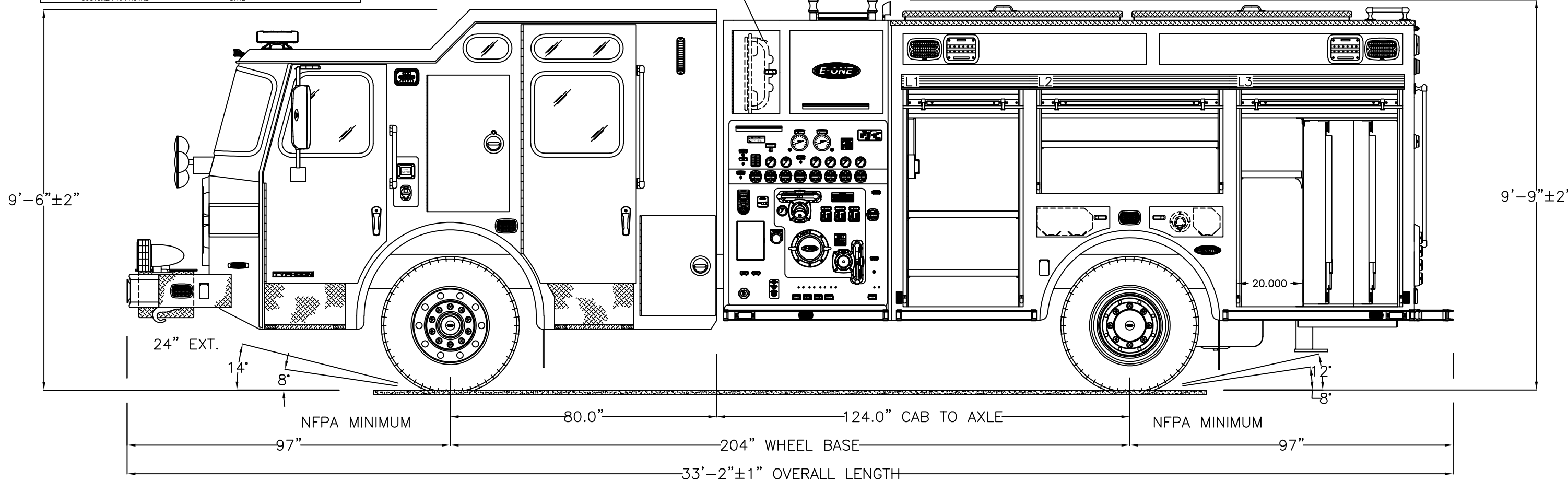
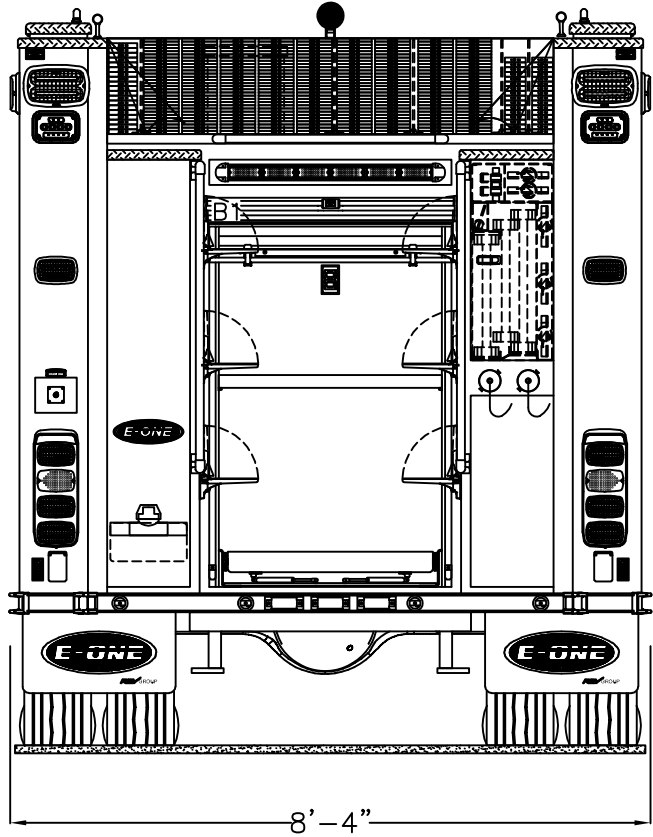
COMPT.	OPENING		INTERIOR DIMENSION			
L1	34W	59H	36W	3H	12D	UPPER
			36W	56H	26D	LOWER
L2	54W	25H	56W	3H	12D	UPPER
			56W	22H	26D	LOWER
L3	48W	59H	36W	3H	12D	FRONT UPPER
			36W	56H	26D	FRONT LOWER
			14W	3H	10D	REAR UPPER
			14W	56H	24D	REAR LOWER
R1	34W	59H	36W	25H	12D	UPPER
R2	54W	25H	56W	25H	12D	LOWER
R3	48W	59H	36W	25H	12D	FRONT UPPER
			36W	30H	26D	FRONT LOWER
			14W	25H	10D	REAR UPPER
			14W	30H	24D	REAR LOWER
B1	36W	51H	38W	67H	26D	

THIS DRAWING IS FOR REFERENCE PURPOSES. ALL DIMENSIONS ARE SUBJECT TO MINOR VARIATIONS DUE TO MANUFACTURING PROCESSES.  
(FOR INTERNAL SALES PURPOSES ONLY)

DEALER APPROVAL \_\_\_\_\_ DATE \_\_\_\_\_  AS IS  
CUSTOMER APPROVAL \_\_\_\_\_ DATE \_\_\_\_\_  WITH REVISIONS



TRANSVERSE COMPARTMENT  
CAPABLE OF STORING  
A TWO-PIECE STOKES  
BASKET



DGALLAGHER	A.8	ORDER RELEASE	2023-MAY-26	DGALLAGHER
DRAWN BY	REV	DESCRIPTION	DATE	APPROVED
		APPROVAL REVISIONS		SHEET 1 OF 2

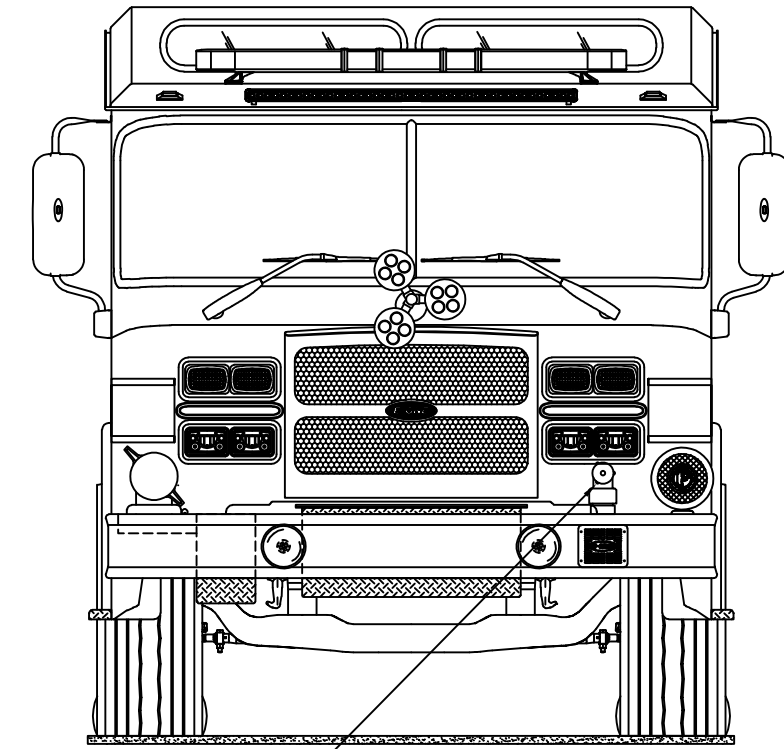


**BRYN MAWR FIRE COMPANY**  
**BRYN MAWR, PA**  
*SO 146162 / Q117507*  
**PUMPER**  
**TYPHOON 4X2 CHASSIS**

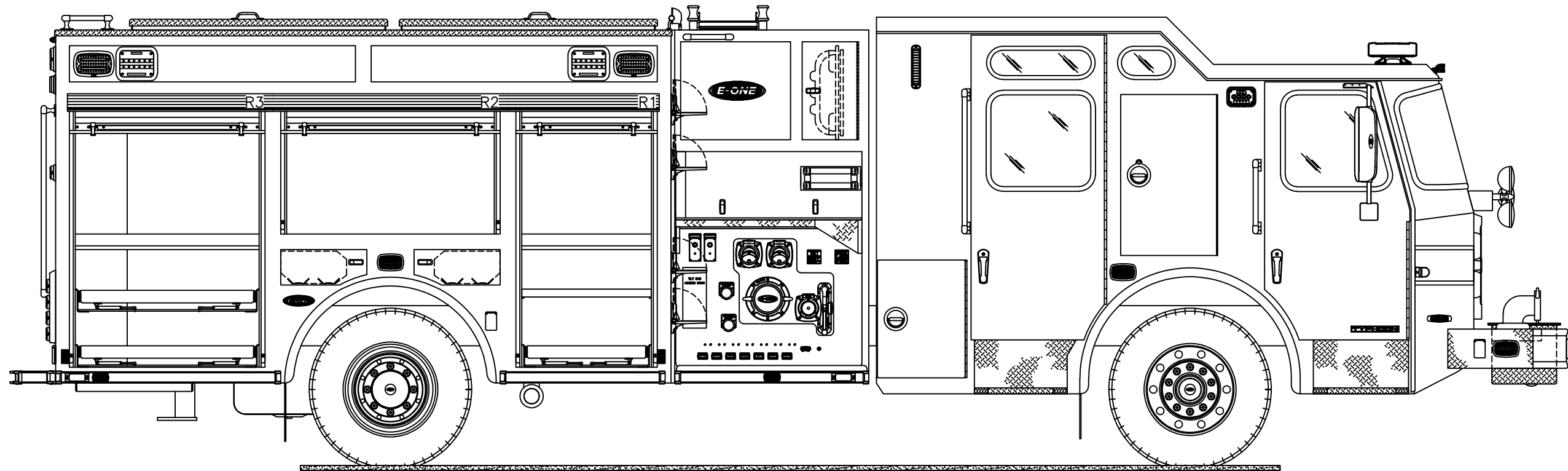
THIS DRAWING IS FOR REFERENCE PURPOSES. ALL DIMENSIONS ARE  
 SUBJECT TO MINOR VARIATIONS DUE TO MANUFACTURING PROCESSES.

(FOR INTERNAL SALES PURPOSES ONLY)

DEALER APPROVAL \_\_\_\_\_ DATE \_\_\_\_\_  AS IS  
 CUSTOMER APPROVAL \_\_\_\_\_ DATE \_\_\_\_\_  WITH REVISIONS



LOCATE DISCHARGE 30" FROM  
 CENTER OF BUMPER



DGALLAGHER	A.8	ORDER RELEASE	2023-MAY-26	DGALLAGHER
DRAWN BY	REV	DESCRIPTION	DATE	APPROVED
		APPROVAL REVISIONS		SHEET 2 OF 2